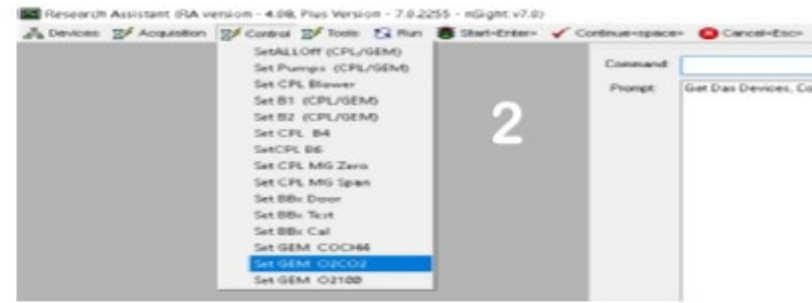
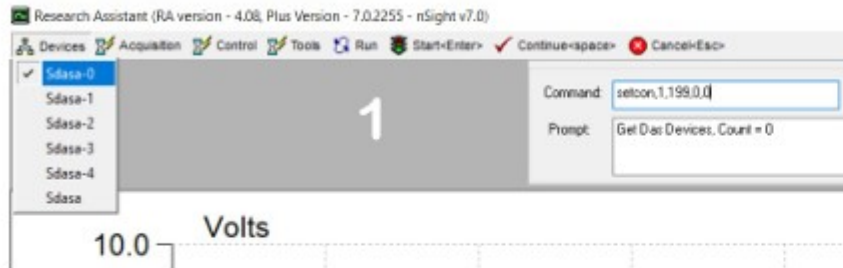


O2 Adjustment - Plus RA



With the case removed from the GEM, adjust the O2 Gain control until The Difference is as close as you can achieve to 5.625v (+- 0.05v).

Go Into Tools and select Adjust O2, adjust the Offset Pot until the Difference is -10.625v (+- 0.05v). Use the O2 Gain Pot to adjust the top of the line to around 7.5 (Fig 1) Re-adjust O2 Gain Pot as required.

Now come out of Plus RA, go into the KoKo software, and perform the normal O2 / N2 Calibrations.

	Channel ID	Channel Name	Current	Min	Max	Diff	Average
Channel 1	12 (Ch)	He1, GMCO2					
Channel 2	0 (Oh)	CPX O2, GMO2				5.625	

	Channel ID	Channel Name	Current	Min	Max	Diff	Average
Channel 1	12 (Ch)	He1, GMCO2					
Channel 2	0 (Oh)	CPX O2, GMO2				-10.625	

