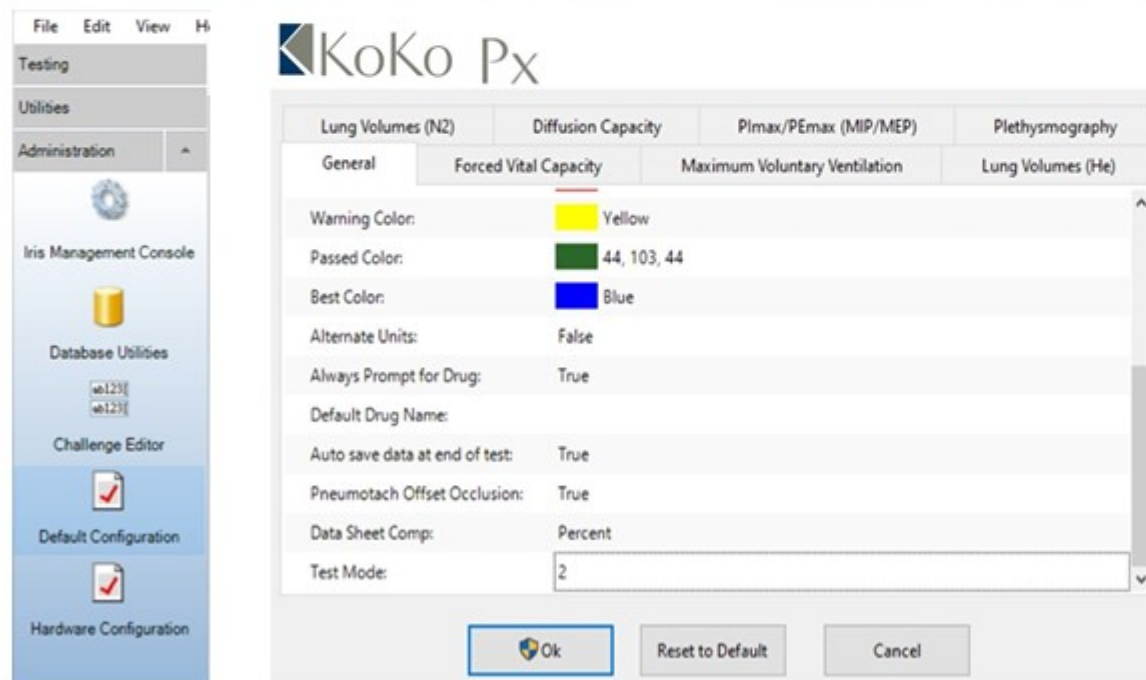


GEM Syringe Test

Perform the following tests using a Multi-Flow 3-Liter syringe.

From the main screen, select Administration, Default Configuration. From the pop up Configuration Box select General. Now scroll to the bottom and change Test Mode from 0 to 2, select OK and exit to the patient testing screen.

1. Perform a FVC test by selecting Go To, Forced Vital Capacity, (Pull the syringe half way out), now Start Test.
Perform FVC. Results should be 3.00 L ($\pm 3\%$ or 2.91 / 3.09 L).
2. Perform Diffusion Capacity Test. (Pull the syringe half way out), now Start Test.
Do two tests at 2.5-Liters of inspired gas and two tests at 1.5-Liters of inspired gas.



Set the syringe at Maximum flow for two tests and at Minimum flow for the other two tests. Follow the prompts.

(Flush out syringe between tests)

The CH4 and CO readings must be ± 10 counts of each other.

Do not use the second decimal place to the right.

Record the Count Difference
Max Ch4, Max CO, Min Ch4 ,MinCO

After performing syringe testing
Reset the Test Mode parameter to 0.