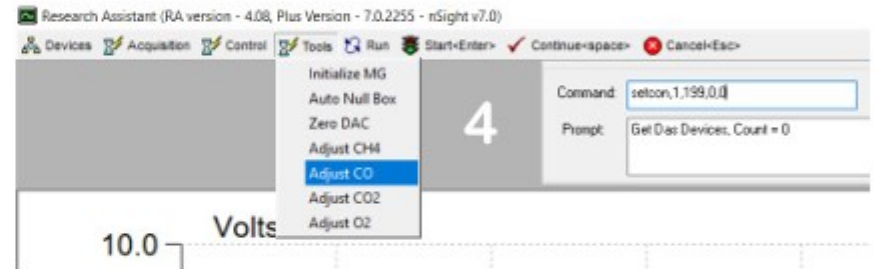
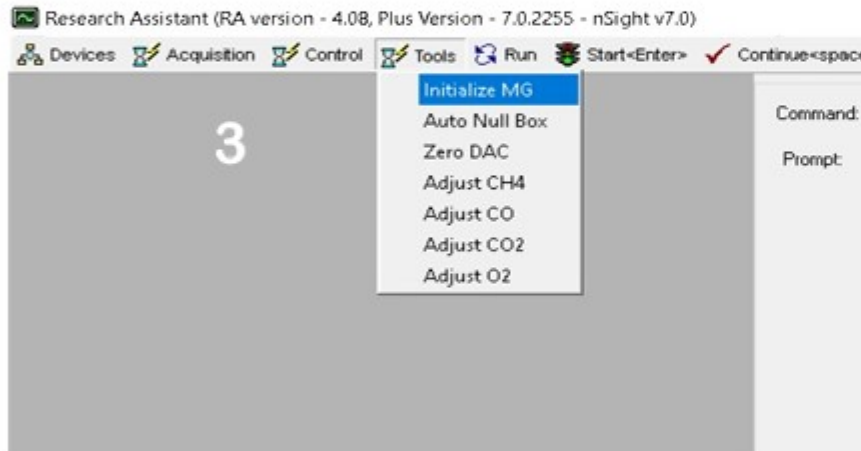


# Co Adjustment - Plus RA



With the case removed from the GEM, adjust the Co control until  
 The Difference is as close as you can achieve to 3.3v ( +/- 0.05v )  
 Now come out of Plus RA, go into the KoKo software, and perform the  
 normal Co / MGA Calibrations.

	Channel ID	Channel Name	Current	Min	Max	Diff	Average	Freq.
Channel 1	8 (8h)	MGCO, GMCO				3.3		

