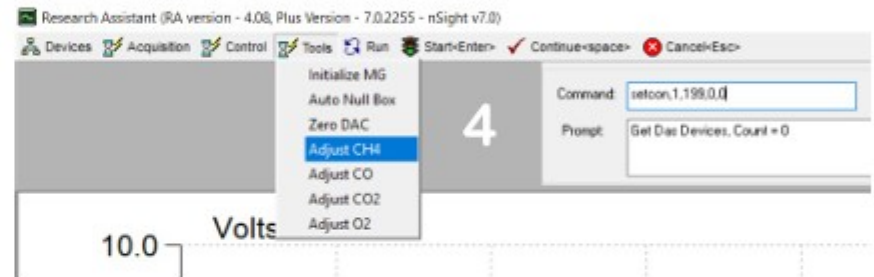
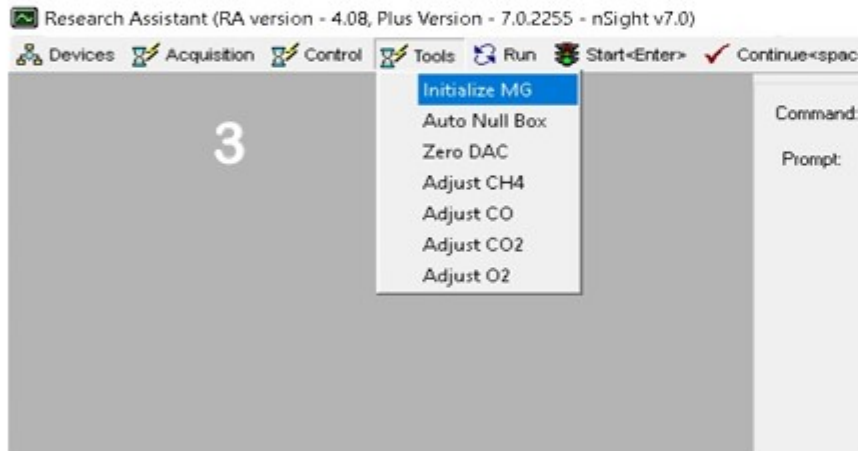
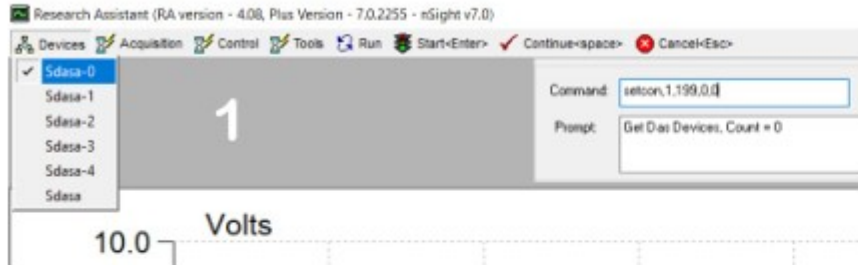


CH4 Adjustment - Plus RA



With the case removed from the GEM, adjust the CH4 control until
 The Difference is as close as you can achieve to 3.3v (+ 0.05v)
 Now come out of Plus RA, go into the KoKo software, and perform the
 normal CH4 / MGA Calibrations.

Channel ID	Channel Name	Current	Min	Max	Diff	Average	Freq.
Channel 1	11 (Bh) GMCH4				3.3		

